

PETITION TO THE  
INTERNATIONAL FRATERNITY  
OF DELTA SIGMA PI

SUBMITTED BY ALPHA PSI OMEGA  
INDIANAPOLIS, INDIANA  
MARCH 22, 1982

PETITION TO THE INTERNATIONAL  
FRATERNITY OF DELTA SIGMA PI

SUBMITTED BY ALPHA PSI OMEGA

INDIANA UNIVERSITY/PURDUE UNIVERSITY AT INDIANAPOLIS  
Indianapolis, Indiana

March 22, 1982

## TABLE OF CONTENTS

Petition and Signatures

Letters of Recommendation

The City of Indianapolis

Indiana University/Purdue University at Indianapolis  
Campus Photographs  
Enrollment Statistics

Indiana University School of Business  
History  
Dedication Speech  
Indianapolis Faculty

Alpha Psi Omega  
History  
Purpose  
Members  
Group Activities

PETITION TO THE INTERNATIONAL FRATERNITY OF DELTA SIGMA PI

To the Board of Directors of the International Fraternity of Delta Sigma Pi:

We, the undersigned brothers and sisters of Alpha Psi Omega, hereby earnestly petition for a charter to establish a chapter of the International Fraternity of Delta Sigma Pi on the campus of Indiana University-Purdue University at Indianapolis, Indiana.

Alpha Psi Omega was formed exclusively for the purpose of affiliating with Delta Sigma Pi Professional Fraternity. The present aims, purposes, and requirements reflected in our By-laws were patterned after and are commensurate with the same high ideals of Delta Sigma Pi. In pursuit of this affiliation, the brothers and sisters of Alpha Psi Omega pledge to uphold the rules and regulations as set forth in the Constitution and By-laws of the International Fraternity of Delta Sigma Pi, and further, to carry out its traditions and programs. The following duly-elected officers assume responsibility for providing leadership toward these goals:

President - Darrell Pieczko  
Senior Vice President - Paul Spellman  
Vice President of Professional Activities - Peggy Howard  
Vice President of Pledge Education - Beth Schuh  
Treasurer - Tina Hedrick  
Secretary - Kimalie Webb  
Chancellor - Joseph Malcom  
Historian - Frances Lutocka

These officers, with fellow brothers and sisters of Alpha Psi Omega, affix our signatures on the following page in support of this petition.

Thomas C. Burrell

Steven E. Pruner

Dirk P. Manella

Clayton C. Dells

John D. Fitzgerald

Ronald S. Liles

Don Reed

Randy Dobbs

Kim Bottin

Sina R. Hedrick

Eric E. Kline

Steven L. Center

Libby Chambers

Annette M. Williams

Michael A. Haroldson

Wilson L. Smith

Christopher H. Walter

Elizabeth Schulz

Cynthia M. Dall

Jacqueline Goodloe

Angie Samanie

Kimmale Webb

Sabrina Parker

John M. Burkhom

Russell M. Kuyper

Frances L. Lutocka

Joseph Allen Mabe

Peggy B. Howard

Paul V. Spelman

Chong A. Choi

Nathanial R. Shope

Larry Schulz

Board of Directors  
Delta Sigma Pi  
110 South Central Avenue  
Columbus, OH 43260

To the Board of Directors:

As representatives of the State of Indiana, it is my pleasure to recommend that the Alpha Psi Omega chapter of Indiana University Purdue University at Indianapolis be accepted as a chapter of your fraternity.

### LETTERS OF RECOMMENDATION

The State of Indiana is a professional business fraternity. We feel that our students as well as our business community will prosper and grow from an association with a national fraternity.

Sincerely,



ROBERT J. RICE  
Governor

12/14

OFFICE OF THE GOVERNOR  
INDIANAPOLIS, INDIANA 46204

March 4, 1982

Board of Directors  
Delta Sigma Pi  
330 South Campus Avenue  
Oxford, OH 45056

To the Board of Directors:

As Governor of the State of Indiana, it is my pleasure to recommend that the Alpha Psi Omega pledge class of Indiana University Purdue University at Indianapolis be accepted as a chapter of your fraternity.

The State of Indiana is always happy to welcome a professional business fraternity. We feel that our students as well as our business community will prosper and grow from an association with a national fraternity.

Sincerely,



ROBERT D. ORR  
Governor

RDO:pk





# CITY OF INDIANAPOLIS

WILLIAM H. HUDNUT, III  
MAYOR

January 28, 1982

Board of Directors  
Delta Sigma Pi  
330 South Campus Avenue  
Oxford, Ohio 45056

To the Board of Directors:

It is a pleasure to recommend that the Indiana University-Purdue University at Indianapolis pledge class of Delta Sigma Pi be accepted as a chapter of your nationwide organization.

We in Indianapolis would welcome such a professional business fraternity. Its members surely would enhance our business community as they foster the study of business in universities and pursue other worthy goals related to business education.

Therefore, I am pleased that Indianapolis has a Delta Sigma Pi Alumni Club in Indianapolis, and I hope we will soon have a working chapter.

Thank you for your consideration and best wishes for continued success.

Sincerely yours,

A handwritten signature in black ink that reads 'William H. Hudnut, III'. The signature is written in a cursive, slightly slanted style.

William H. Hudnut, III

WHH:kb



INDIANA UNIVERSITY

THE PRESIDENT'S OFFICE  
Bryan Hall 200  
Bloomington, Indiana 47405  
(812) 337-4613

March 4, 1982

Board of Directors  
Delta Sigma Pi  
330 South Campus Avenue  
Oxford, Ohio 45056

To the Board of Directors:

I should like to join Dean Otteson and others in recommending that the Indiana University-Purdue University at Indianapolis pledge class of Delta Sigma Pi be admitted as a chapter of your nationwide organization.

I know the value of a professional business fraternity. The presence of such an organization on our Indianapolis campus will help prepare our students for their role in life after graduation. It will also help them to relate their studies to real life situations.

We shall appreciate it, therefore, if the pledge class can be accepted for membership in your Fraternity.

Sincerely yours,

A handwritten signature in black ink, appearing to read "John W. Ryan", written over the typed name and title.

John W. Ryan  
President

nr



INDIANA UNIVERSITY

SCHOOL OF BUSINESS  
Bloomington/Indianapolis

OFFICE OF THE DEAN  
801 West Michigan Street  
P.O. Box 647  
Indianapolis, Indiana 46223  
(317) 264-2481

March 1, 1982

Board of Directors  
Delta Sigma Pi  
330 South Campus Avenue  
Oxford, OH 45056

To Whom It May Concern:

I heartily endorse the petition of the Alpha Psi Omega pledge class to become a chapter of your fraternity.

Delta Sigma Pi will be the first professional business fraternity on our Indianapolis campus. I believe that your organization will help us continue our growth and promote a closer affiliation between our business students and the commercial world.

I urge you to accept the Alpha Psi Omega pledge class as a chapter.

Sincerely,

A handwritten signature in black ink, appearing to read "S. Otteson".

Schuyler F. Otteson  
Dean

SFO:jh

WILLIAM P. JONES, JR.  
ATTORNEY-AT-LAW

755 E. MAIN, SUITE 6  
GREENWOOD, INDIANA, 46142

TELEPHONE  
888-3543

March 22, 1982

Board of Directors  
Delta Sigma Pi  
330 S. Campus Avenue  
Oxford, OH 45056

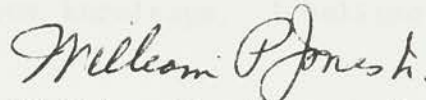
Gentlemen:

In my capacity as faculty advisor to the Alpha Psi Omega chapter at Indiana University-Indianapolis, I hereby endorse this organization as it seeks affiliation with Delta Sigma Pi.

The excellent leadership potential already exhibited should be an asset to the fraternity, local student body and the Indianapolis business community.

I believe that all requirements for application have been met.

Sincerely,



William P. Jones, Jr.  
Attorney-CPA

WPJ/slm



## *IUPUI Student Assembly*

---

avanaugh Hall 001C  
25 W. Michigan St.  
Indianapolis, IN 46202  
317-264-3907

February 25, 1982

David Craig  
President, IUPUI Student Body

Board of Directors  
Delta Sigma Pi  
330 Campus Ave.  
Oxford, OH

To Whom it May Concern;

On behalf of the Student Body of Indiana University - Purdue University at Indianapolis, I believe that Delta Sigma Pi would be a valuable addition to our campus.

I heartily endorse the application of the Alpha Psi Omega chapter because it will strengthen our already close ties with the business community of Indianapolis. In today's business world, close ties with the business community are vital to applying classroom knowledge. I believe Delta Sigma Pi will compliment these goals very well.

Again, I urge you to accept the application of the Alpha Psi Omega chapter of Delta Sigma Pi.

Most Sincerely,

David Craig, President  
IUPUI Student Body

DC:kw

## THE CITY OF INDIANAPOLIS

In the early 1800s, the city of Indianapolis was founded by William Henry Harrison, who later became the 9th President of the United States. The city was established on the banks of the White River, and its location was chosen for its strategic position as a center of commerce and transportation. The city's growth was rapid, and it became one of the largest cities in the Midwest. The city's architecture is a mix of classical and neoclassical styles, and it is known for its many parks and green spaces. The city's economy is diverse, with a strong focus on technology and manufacturing. The city's history is rich and varied, and it has played a significant role in the development of the United States.

The city of Indianapolis was founded by William Henry Harrison, who later became the 9th President of the United States. The city was established on the banks of the White River, and its location was chosen for its strategic position as a center of commerce and transportation. The city's growth was rapid, and it became one of the largest cities in the Midwest. The city's architecture is a mix of classical and neoclassical styles, and it is known for its many parks and green spaces. The city's economy is diverse, with a strong focus on technology and manufacturing. The city's history is rich and varied, and it has played a significant role in the development of the United States.

During the early years of its history, Indianapolis played an important role in the city's growth. When the state capital was moved to Indianapolis from Corydon in 1816, the city's population increased significantly. The city's location on the White River made it a major center of commerce and transportation. The city's growth was rapid, and it became one of the largest cities in the Midwest. The city's architecture is a mix of classical and neoclassical styles, and it is known for its many parks and green spaces. The city's economy is diverse, with a strong focus on technology and manufacturing. The city's history is rich and varied, and it has played a significant role in the development of the United States.

1825, many families lived in the city, and a variety of stores and workers

provided services for the **HISTORY OF INDIANAPOLIS** needs of government

brought additional growth and reputation to the town, which was incorporated

In the 1700's, central Indiana was the home of the Miami and Delaware  
In 1836, attaining status as a city in 1847. Before White River never had  
Indians, who fished and hunted in the streams and forests of the area. William  
been navigable, the White River Canal was built in 1835, providing water  
Connor built a trading post on White River upstream from where Indianapolis  
power for woolen, grist, and paper mills. The arrival of the railroad in  
now stands, and developed a lively trade between the local Indians and white  
1847 transformed Indianapolis into a major trade and manufacturing center.  
settlements along the Whitewater River. In 1818, a wagon trail was cut, and  
By 1860, more than 100 manufacturing firms formed a strong economic base  
families began to settle in the area. William Connor helped negotiate a treaty  
for the city. The stockyards were built in 1876 and meat packing companies  
providing for the sale of Indiana lands to the state government. By 1820,  
topped all other producers. Other industries were also developing, and  
Indiana politicians, beset by civic squabbling, decided to carve a new  
railroads, iron foundries, and metal products gained in importance. By  
state capital from the squamplands in the geographic center of the state.

1802, the city's interurban railway system was serving much of the state.  
Commissioners were sent to inspect land along the banks of the White River,  
In the early years of the automobile industry, many cars were produced  
and a site southeast of the junction of White River and Fall Creek was chosen.  
here, and in 1911 the first 500 mile race was held at the Indianapolis Motor  
The site provided falls to power future mills, high banks to support bridges,  
Speedway. Over the years, the Indianapolis 500 has become known worldwide,  
and a vast amount of land for future expansion. Jeremiah Sullivan suggested  
bringing international acclaim to our town.

the name "Indianapolis" for the new town. Alexander Ralston, who laid out  
Another result of the automobile's popularity was the demand for new  
the U. S. capital, was asked to plan the city. He drew a map showing a city  
and better roads. Already a major rail center, the expansion of the highway  
a mile square, with a circle in the center and four diagonal streets pointing  
system made Indianapolis the "Crossroads of America," as many nationwide  
toward the circle. People liked the plan, and despite heavy underbrush and  
traffic routes intersect here. Although the city's automobile industry declined,  
swampy ground, the new city began to take the distinctive shape we know so well.  
production of mowers and auto parts has continued to be important. Heavy

During the early years, agriculture played an important role in the city's  
equipment, appliances, furniture, pharmaceuticals, meat and paper products  
growth. When the state capital was moved to Indianapolis from Corydon in  
are significant products of Indianapolis factories, and local companies have  
developed national and international markets for their products.

1825, many families lived in the city, and a variety of stores and workers provided services for the growing population. The business of government brought additional growth and reputation to the town, which was incorporated in 1836, attaining status as a city in 1847. Because White River never had been navigable, the White River Canal was built in 1839, providing water power for woolen, girst, and paper mills. The arrival of the railroad in 1847 transformed Indianapolis into a major trade and manufacturing center. By 1860, more than 100 manufacturing firms formed a strong economic base for the city. The stockyards were built in 1876 and meat packing companies topped all other producers. Other industries were also developing, and railroads, iron foundries, and metal products gained in importance. By 1902, the city's interurban railway system was serving much of the state. In the early years of the automobile industry, many cars were produced here, and in 1911 the first 500 mile race was held at the Indianapolis Motor Speedway. Over the years, the Indianapolis 500 has become known worldwide, bringing international acclaim to our town.

Another result of the automobile's popularity was the demand for new and better roads. Already a major rail center, the expansion of the highway system made Indianapolis the "Crossroads of America," as many nationwide traffic routes intersect here. Although the city's automobile industry declined, production of motors and auto parts has continued to be important. Heavy equipment, applicances, furniture, pharmaceuticals, meat and paper products are significant products of Indianapolis factories, and local companies have developed national and international markets for their products.



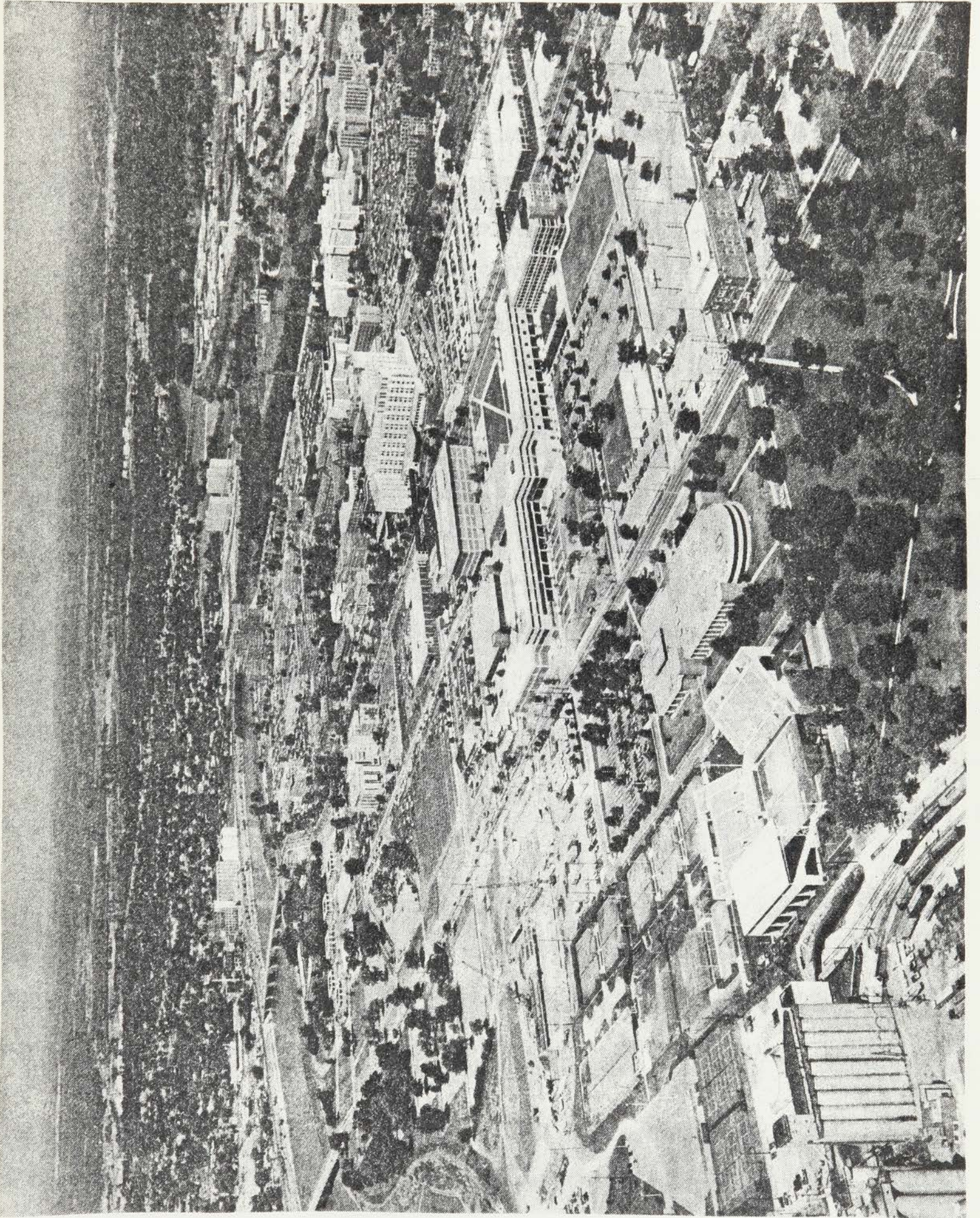
In addition to being the state capital, Indianapolis is also the center of county government. In 1970, Indianapolis and Marion County adopted Uni-Gov, a metropolitan form of government that has been a model for similar systems throughout the country. This merging of city and county government broadened the tax base and improved the local business climate, while providing more efficient service to the public. More than 80 firms locate each year in Indianapolis, providing a base of more than 1100 area manufacturers. There are 540,000 wage and salaried employees in the area. Testifying to the growth of the city, a number of facilities have appeared in the last decade. Among them are the 36-story Indiana National Bank Tower, the 500-room Hyatt Regency Mercnats Plaza Complex, the \$26 million Convention-Exposition Center, and Market Square Arena. We also have a new Post Office and Federal Building, the Indiana Bell Telephone Company tower, and Market Square Center. Our own IUPUI has seen major construction almost continuously, as our new buildings provide space to meet the demands of a thriving community for education and other university services.

Cultural needs have not been neglected in Indianapolis. Our Symphony Orchestra is nationally famous, as is the Indiana Repertory Theater. An opera company, ballet troupe, and modern dance ensemble flourish. The Museum of Art has a continuous stream of programs and exhibitions, and the world's largest children's museum resides in our city. Many other theater and musical groups perform to satisfied audiences; the city offers something for every taste.

The same lands the Indianas roamed so freely still provide outdoor enjoyment in 166 park areas. The city is currently the twelfth largest in the nation, and due to the foresight of those early men who chose the site, still has room to grow in all directions. We are seeing the development of sporting facilities that may rank Indianapolis as the amateur sports capital of the country. The new American United Life Building, the state's tallest building, is changing the city's skyline. At the very edge of the IUPUI campus, the White River Park will be developed. There have been many changes since the Indianas fished White River and roamed its banks, and history is still being written as the future of Indianapolis unfolds to meet the needs of its people.

INDIANA UNIVERSITY/PURDUE UNIVERSITY AT INDIANAPOLIS

INDIANA UNIVERSITY/PURDUE UNIVERSITY AT INDIANAPOLIS

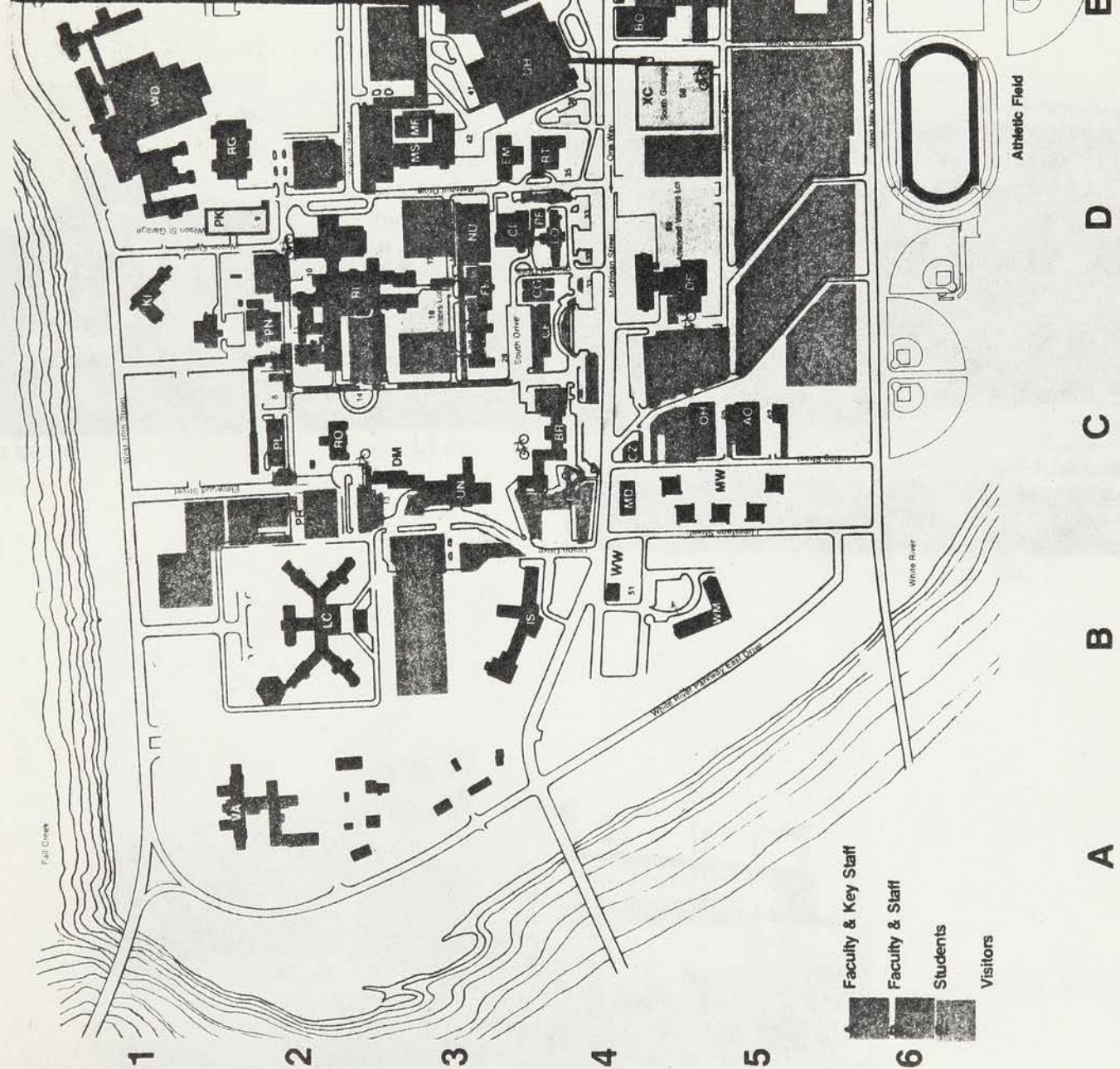


Aerial View of IUPUI

Fall Creek

### Map Index

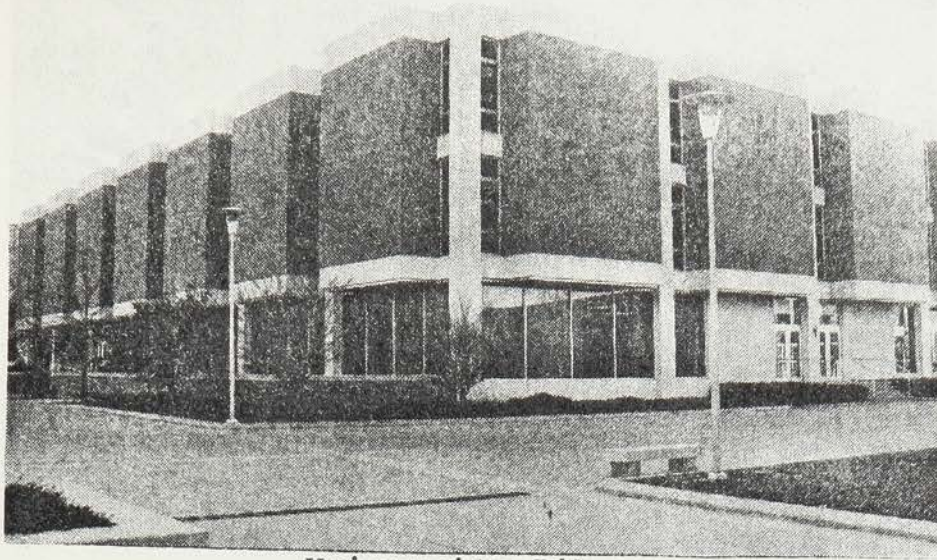
- |    |                                 |    |
|----|---------------------------------|----|
| 6E | Natorium/Physical Education     | NT |
| 4G | Mary Cable Building             | SI |
| 3D | Medical Research Facility       | MF |
| 3D | Medical Science Building        | MS |
| 3D | Nursing Building                | NU |
| 5C | Oral Health Research Institute  | OH |
| 4E | Parking Garage (Michigan East)  | XB |
| 5E | Parking Garage (Michigan South) | XC |
| 2D | Parking Garage (Wilson St)      | PK |
| 2C | Physical Plant                  | PL |
| 2C | Power Plant                     | PN |
| 4D | Post Office                     | PF |
| 2B | Psychiatric Research Building   | PR |
| 5G | Purchasing/Stores               | PX |
| 4D | Radiation Therapy               | RT |
| 3C | Riley Hospital for Children     | RI |
| 4C | Ronald McDonald House           | RD |
| 2C | Rotary Building                 | RO |
| 3C | Single Student Dorm             | DM |
| 3C | Union Building                  | UN |
| 4E | University Hospital             | UH |
| 5F | University Library              | LY |
| 3C | University Services             | UV |
| 5B | Warthin Apartments              | WM |
| 4B | Workshops Center                | WW |
- 
- |    |   |    |
|----|---|----|
| 5C | Administration Building                           | AO |
| 4C | Ball Residence                                    | BR |
| 4E | Berkey Building                                   | HD |
| 4E | Bowers Building (Parking)                         | BO |
| 5F | Business/SPEA Building                            | BS |
| 5E | Cavanaugh Hall                                    | CA |
| 4D | Clinical Building                                 | CL |
| 4C | Coleman Hall                                      | CF |
| 4G | Cottages  | CG |
| 4G | Counseling Center (419 Blackford)                 | BX |
| 5D | Dentistry Building                                | DS |
| 5F | Education/Social Work Building                    | AF |
| 4D | Emerson Hall                                      | EM |
| 4F | Engineering & Technology Building                 | ET |
| 3C | Fesler Hall                                       | FH |
| 5G | Graduate Townhouses                               | MW |
| 4C | Indianapolis Center for Advanced Research (ICFAR) | CZ |
| 6G | Indianapolis Sports Center                        | TN |
| 6G | Law School  | LS |
| 5E | Lecture Hall                                      | LE |
| 4D | Long Hospital                                     | LO |



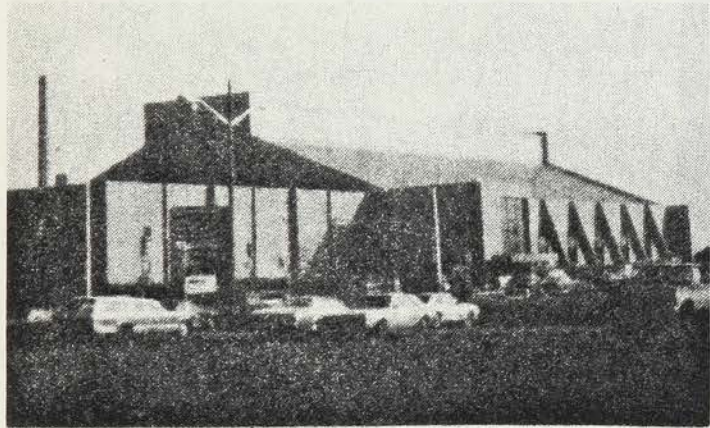
- Faculty & Key Staff
- Faculty & Staff
- Students
- Visitors

1 2 3 4 5 6

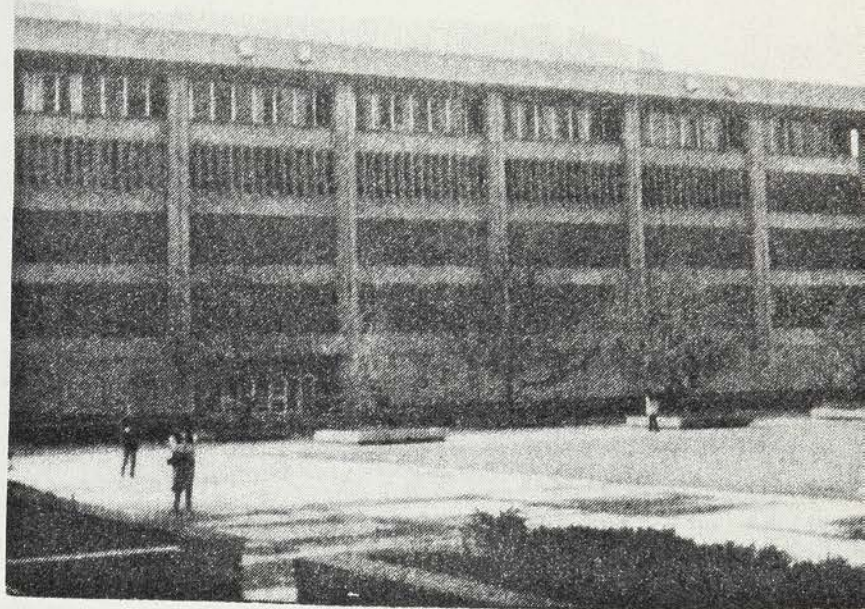
A B C D E F G H



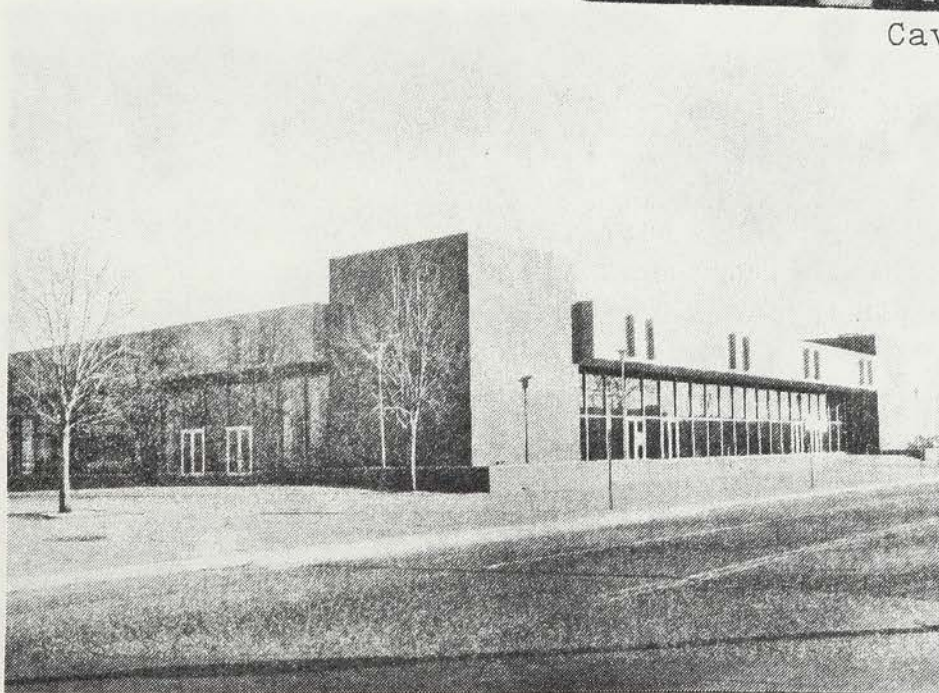
University Library



Natatorium/Physical Education



Cavanaugh Hall



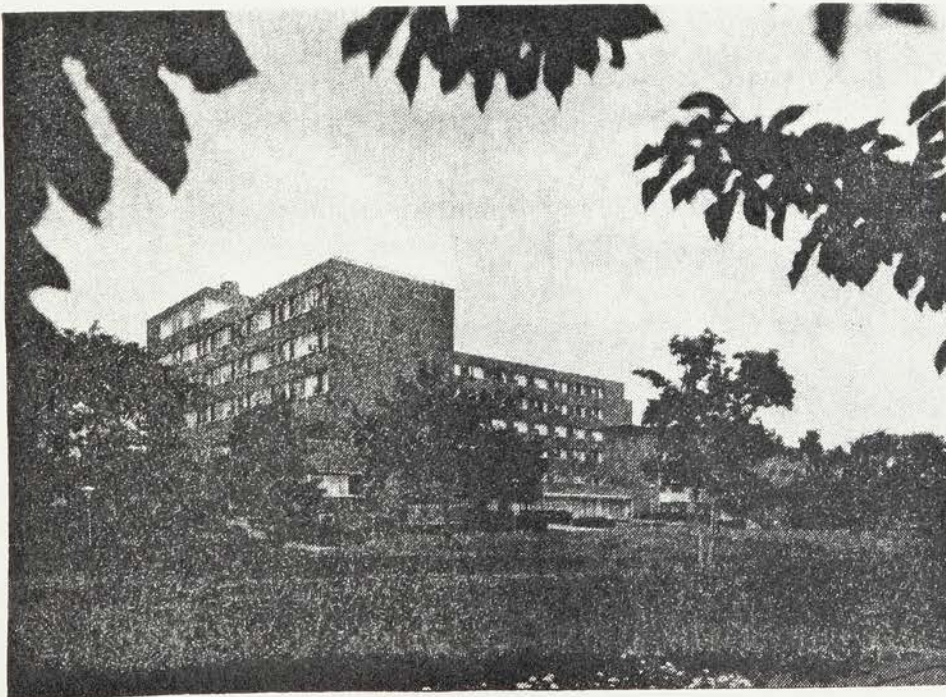
Lecture Hall



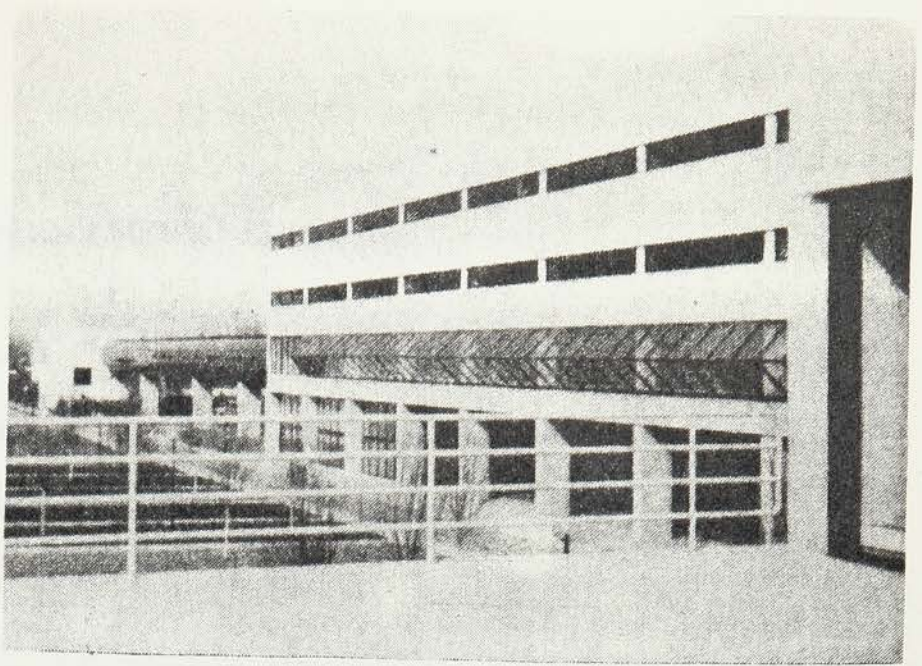
University Hospital



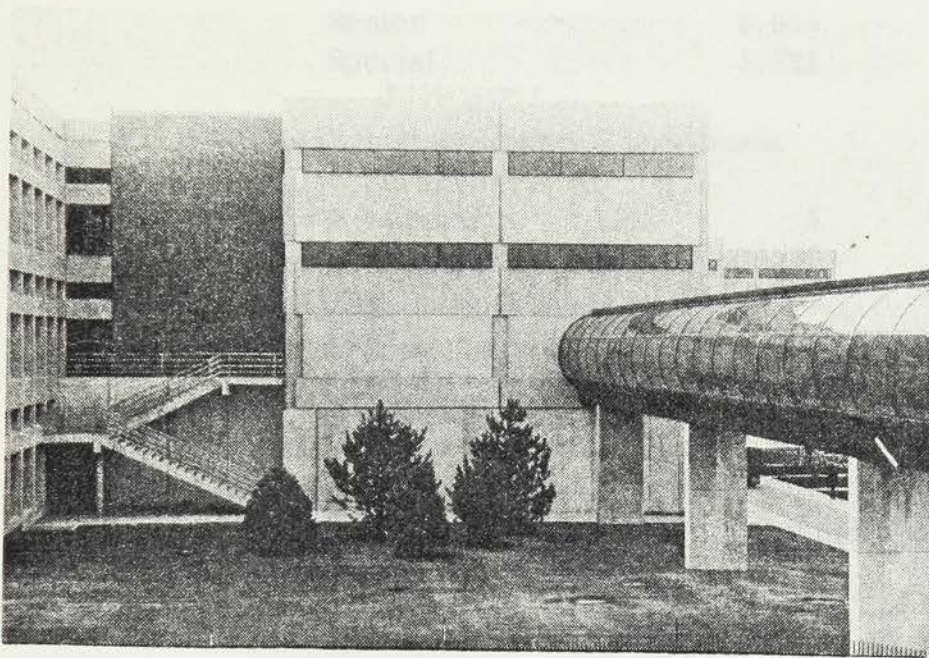
Ball Residence



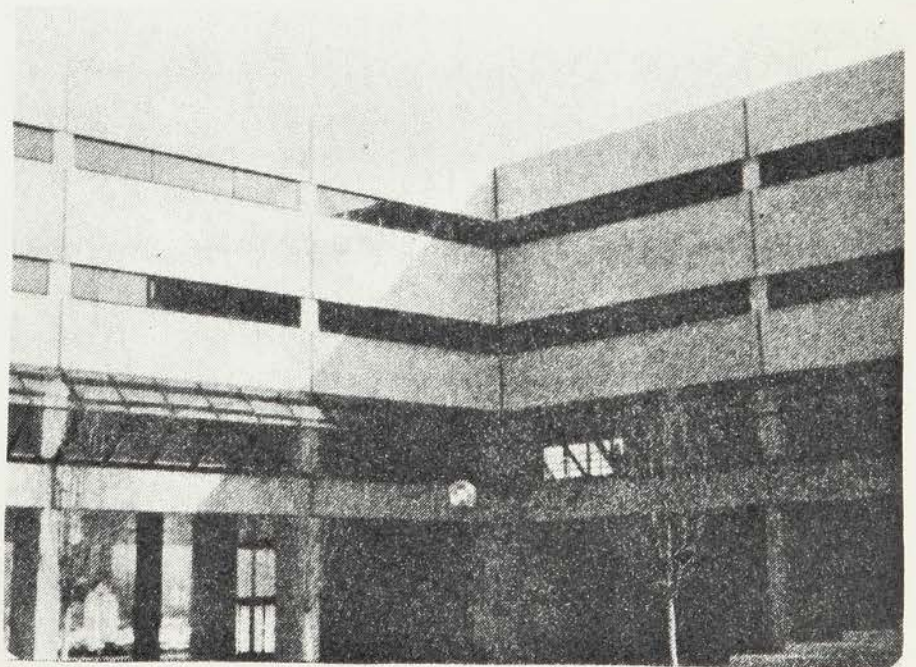
Union Building



Business Building



Business Building



Business/SPEA Building



## ENROLLMENT STATISTICS

|                                  |       |        |
|----------------------------------|-------|--------|
| Total IUPUI Enrollment           |       | 20,082 |
| Graduate students                |       | 4,205  |
| Undergraduate students           |       |        |
| Freshmen                         | 5,889 |        |
| Sophomore                        | 3,529 |        |
| Junior                           | 2,412 |        |
| Senior                           | 2,326 |        |
| Special                          | 1,721 |        |
| Total Business School Enrollment |       | 1,308  |
| Freshmen                         | 5     |        |
| Sophomore                        | 85    |        |
| Junior                           | 257   |        |
| Senior                           | 501   |        |
| Masters                          | 458   |        |
| Doctorates                       | 2     |        |

Indiana University is a member of the American Assembly of Collegiate Schools of Business.

- 1920 ...
- 1922 ...

INDIANA UNIVERSITY SCHOOL OF BUSINESS

- 1920 ...
- 1921 ...

1922 ...

1923 ...

HISTORY - INDIANA UNIVERSITY SCHOOL OF BUSINESS

1820 - 1982

- 1820 Created as Indiana College.
- 1829 At the beginning of the College's ninth session, the Board of Trustees notes:
- "With the greatest confidence, (we) present the State College to the special patronage of our own citizens: Whilst they are fully persuaded, that to the citizens of the neighbouring states, no western institution of learning, in regard to cheapness of living, the low price of tuition, the salubrity of the situation, and the comparatively little temptation to vice, affords stronger inducements than Indiana College."
- 1838 The college becomes a university, but graduating classes before the Civil War rarely number as many as twelve.
- 1885 Dr. David Starr Jordan, the University's new president, writes to a friend about Bloomington:
- "One street was covered with gravel, the others, almost impassable after rain, being composed of bright red clay and crossed by pedestrians on stepping-stones made of rough cubes of limestone... The central square of town was marked by saddle horses and teams of the neighboring farmers ... aiming to spend Saturday afternoon at the county seat."
- 1902 The University assembles basic business offerings which were announced in the catalog as "Commercial Courses".
- 1904 The Indiana University Bulletin, defending the value of a business education, writes:
- "In industry and commerce all things are becoming new; and the new methods of preparing young men for these occupations must be invented with discriminating foresight, established with prudence and maintained with liberality."

- 1908 Miss Goodbody, Dean of Women, announces uniform house rules. Rule #3:  
 "Young women shall not drive in single carriages at night: and when driving in double carriages shall be home by nine o'clock."
- 1916 William A. Rawles is named Director of Commercial Courses, which constitute two years of a four-year course leading to a baccalaureate degree.
- 1920 The School of Commerce and Finance are established. Initial enrollment is seventy. The first graduating class (Spring, '21) will number fourteen.
- 1923 Commerce Hall, the School's new building, is dedicated and the Indianapolis Star trumpets:  
 "Commerce Hall typifies the new era of education in its relation to the business world, a physical reminder of the link which binds the modern university to the economic life of the state and nation."
- 1925 The Bureau of Business Research is organized and begins publication of the Indiana Business Review to provide a comprehensive survey of business conditions in the state.
- 1932 The Board of Trustees approves a four-year course allowing freshmen to enroll directly into the School of Commerce and Finance. At the same time, the School's name becomes School of Business Administration.
- 1935 Herman B. Wells becomes Dean of the School of Business Administration. In the same year, the graduate degree of Master of Science is approved for the School.
- 1937 The largest group of students ever to enroll in the University--more than 5,500--are on campus when Dean Wells leaves the School of Business Administration to become acting President.

- 1938 Name changed to School of Business.
- 1939 Arthur W. Weimer, Professor of Real Estate, is named Dean of the School of Business.
- 1941 The University goes on wartime footing, adopting an accelerated academic calendar which provides for the year-round operation of all schools and departments. The normal four academic years can be completed in two and two-thirds calendar years. Dean Weimer goes to war and an acting dean is appointed in his absence.
- 1946 The war is over and the University braces for the veterans. Enrollment in the School of Business almost triples to 915. Dean Weimer observes that the veterans are "industrious, mature, and seriously interested in preparing themselves for careers."
- 1947 A year of significant developments in the School of Business. Departments of Marketing, Business Education, Management, Accounting and Finance are begun. The MBA degree is created, replacing Master of Science in Business and Master of Commercial Science. Fifty-three students qualify for their MBAs.
- 1949 Despite a recession, more than seven hundred business firms visit the school to talk with students about employment.
- 1952 The placement bureau announces that average monthly starting salaries for men with MBA degrees is \$348; for women, \$232.
- 1955 Enrollment in the MBA program exceeds 200 for the first time since its inauguration. Over forty candidates in the doctoral program are in residence, and fifteen degrees are awarded.
- 1958 The Bureau of Business Research begins Business Horizons, a quarterly magazine for management. Some 12,000 copies are distributed worldwide.

- 1960 Awareness of business' role in the international scene leads to the establishment of a graduate program in International Business Administration.
- 1962 Enrollment is 16,109 on the Bloomington campus. The entering class includes 226 valedictorians and salutatorians. Approximately 1,000 new freshmen ranked in the upper tenth of their high school classes.
- 1963 Dr. W. George Pinnell, Associate Dean for seven years, is appointed Dean of the School of Business.
- 1964 Ground is broken for the new School of Business Building in Bloomington.
- 1965 The University awards its 2,400th MBA degree, a figure large enough to rank the School as a principal source of supply of business leaders of the future. Several faculty members work with officials at the University of Dacca to establish the first MBA program in East Pakistan (now Bangladesh). Assistance is also given in Indonesia, Thailand and Yugoslavia and will be followed in the next sixteen years by alliances in Venezuela, the Netherlands and China.
- 1966 At the dedication of new building in Bloomington, Dean W. George Pinnell says: "More than 16,000 alumni of the School now make their contribution to the conduct of business affairs."
- 1967 The School is a leader in establishing a Consortium of six universities to encourage minority students to pursue graduate study in management.
- 1971 The innovative integrated "A" Core Program revolving around computerized business simulation, which immerses business undergraduates simultaneously in finance, marketing, and operations management for their first semester, wins a national award, and is later adopted by many universities.

The Dean's Associates is formed to provide closer communication between the School and the business community.

- 1971- Dr. Schuyler F. Otteson, Professor of Business Administration, is appointed sixth Dean of the School of Business. Dean Pinnell is named Vice President of the University, later Executive Vice President.
- 1973 A concerted effort is launched to encourage women to enter careers in business. Results are quick in coming; in less than 8 years, more than one-third of undergraduate students are women.
- 1974 The University adopts a major administrative reorganization. The School of Business expands its mission to the Indianapolis campus and becomes "one school, one faculty, one curriculum at two locations."
- 1976 The Indiana Executive Program celebrates its 25th year with 1,344 executives having completed the intensive six-week program. The new Management in Action Seminar Series of two- and three-day seminars is started. By 1982 1,168 executives will have attended this series in Indianapolis.
- 1978 Ground is broken on the Indianapolis Campus for the new building to house the School of Business and the School of Public and Environmental Affairs.
- 1979 The Addition/Renovation of the Business Building in Bloomington is started, to accommodate the tremendous increase in enrollment. In a letter, Dean Otteson notes: "Enrollments in the School of Business have increased 90 percent since 1971. School enrollment in Indianapolis is 1,600, in Bloomington 5,200."
- 1980 Wall Street Journal reports that IU is named one of four top undergraduate schools of business in the country along with Wharton, Michigan and California, Berkeley.
- Representatives of 834 companies visit the Placement Office seeking Business School graduates for their firms.

1981 The School awards its 27,000th bachelor's degree.

The new Business/SPEA Building on the Indianapolis campus is dedicated.

The School is working with Chinese officials to establish the first MBA program in China.

The new policy moves eligibility for admission to the School of Business up one year to the junior year, encouraging students to study a broader range of basic arts and sciences courses before specializing in business.



Speech by Schuyler F. Otteson, Dean of the School of Business on the October 1, 1981, dedication of the new Business building on the Indianapolis campus:

Up and down the halls of our great institutions of higher learning, we often hear the expression that there is no substitution for the Ivy. This has not so much to do with the buildings, as important as they may be, but with the people and their interpersonal relationships and the curriculum. Tradition is tremendously important, and its age reflects itself in its alumni, its faculty, its status in professional organizations, its inter-relationships with government and industry, and in a great many other ways.

This institution started planting its ivy when it opened its doors in 1920 to what was then considered to be the future population center of the state. Another piece of ivy was planted in 1829 when President Andrew Wylie himself offered the first course in political economy to the senior class, which consisted of four young men. This was the original foundation for our work in economics and later our work in business administration, and thus was the groundbreaking for the curriculum of 1981. Dr. Herman B. Wells, as the new Dean of the School of Business in 1935, publicly announced that the School of Business would reach out to all the counties of the state of Indiana in serving them not only by teaching their students but in service activities. Indianapolis was to receive special attention. Professor Alva Prickett joined the faculty in 1920, and throughout the 1920's and most of the 1930's he regularly offered each semester accounting courses on the Indianapolis campus. Dr. Arthur Weimer consistently taught on this campus while serving as Dean for so many years and volunteered to carry his entire teaching load here in Indianapolis during his last years of service at the University. Executive Vice President W. George Pinnell, while Dean of the School of Business, announced clearly both to his advisory committee and to the public that our programs in business in Indianapolis were to flourish and that we should put every possible effort into expanding and improving the MBA program at this location, and this was done. The trustees in 1974, upon the recommendation of appropriate faculty committees and President Ryan, approved the merger of the business programs on the Indianapolis and Bloomington campuses. This was a major, positive breakthrough for the work at both locations, and we became one school with one faculty, one curriculum, and one student body operating at two locations, with students and faculty free to move back and forth.

Through these many years we have been planting the ivy and enjoying the benefits from becoming a more and more mature institution.

Now we finally have this beautiful and functionally effective new home and are grateful to all who worked so hard to bring this about. Symbolically, it bears the ivy of more than one and a half centuries of effort at Indiana University, and we indeed are proud.

- Anderson, Donald D., Associate Professor of Marketing (1976) B.S., Pennsylvania State University, 1967; M.A., Indiana University, 1970; Ph.D., Indiana University, 1974
- Barry, John C., Associate Professor of Accounting (1976) B.S., University of Louisville (1970) M.B.A., Indiana University, 1974; Ph.D., Indiana University, 1978
- Chickens, Robert L., Associate Professor of Accounting (1976) B.S., Eastern Kentucky University, 1964; M.A., Indiana University, 1968; Ph.D., Indiana University, 1970
- Emmerson, Jack L., Professor of Marketing (1976) B.S., Wright College, 1962; M.A., Ball State University, 1964; Ph.D., Indiana University, 1971
- Ford, Jeffrey G., Associate Professor of Administrative and Behavioral Studies (1976) B.S., University of Maryland, 1971; M.B.A., The Ohio State University, 1973; Ph.D., 1978
- Foss, Marianne B., Lecturer of Accounting (1976) B.S., Indiana University, 1976; M.B.A., 1979
- Goodrich, Jonathan Nathaniel, Assistant Professor of Marketing (1976) B.S., University of North Carolina, 1969; M.A., University of Georgia, 1971; M.B.A., Indiana University, 1974; Ph.D., 1976
- Goodrich, Robert W., Professor of Accounting (1976) B.S., New York University, 1964; M.A., Indiana University, 1967; Ph.D., 1971
- Hall, Robert W., Associate Professor of Operations and Systems Management (1976) B.S., Kent State University, 1964; M.B.A., Indiana University, 1966; Ph.D., 1973
- Hess, Tom H., Lecturer of Accounting (1976) B.S., Calvin College, 1964; M.B.A., Ball State University, 1970
- Leaver, Dwight L., Associate Professor of Accounting (1976) B.S., Central College, 1961; M.A., Pennsylvania State University, 1963; Ph.D., 1968
- Murphy, John H., Professor of Accounting (1976) B.S., Purdue University, 1960; M.B.A., Indiana University, 1966; Ph.D., 1968
- Reilly, Robert H., Associate Professor of Finance (1976) B.S., St. Joseph's University, 1964; M.B.A., Ball State University, 1966; Ph.D., Indiana University, 1972

INDIANAPOLIS FACULTY 1981-1982

- Anderson, Ronald D., Professor of Marketing (1968) B.B.A., University of Iowa, 1962; M.A., 1966; Ed.D., Indiana University, 1973
- Burns, Jane Offutt, Associate Professor of Accounting (1975) B.S.C., University of Louisville, 1961; M.B.A., 1968; D.B.A., Pennsylvania State University, 1976
- Childers, Victor E., Associate Professor of International Business (1966) B.S., Northeast Missouri State Teachers' College, 1955; M.B.A., Indiana University, 1964; D.B.A., 1967
- Engledow, Jack L., Professor of Marketing (1970) A.B., Wabash College, 1953; M.B.A., Butler University, 1964; D.B.A., Indiana University, 1971
- Ford, Jeffrey D., Associate Professor of Administrative and Behavioral Studies (1976) B.S., University of Maryland, 1971; M.B.A., The Ohio State University, 1973; Ph.D., 1975
- Fox, Marianne B., Lecturer of Accounting (1980) B.S., Indiana University, 1978; M.B.A., 1980
- Goodrich, Jonathan Nebadiah, Assistant Professor of Marketing (1976) B.Sc., University of West Indies (Jamaica), 1966; M.A., University of Georgia, 1971; M.B.A., State University of New York, Buffalo, 1974; Ph.D., 1976
- Greenleaf, Robert W., Professor of Accounting (1960) B.S., New York University, 1943; M.A., Indiana University, 1957; D.B.A., 1961
- Hall, Robert W., Associate Professor of Operations and Systems Management (1966) B.S., Rose Polytechnic Institute, 1959; M.B.A., Indiana University, 1965; D.B.A., 1972
- Hare, Thea R., Lecturer in Accounting, (1976) B.A., Calvin College, 1974; M.B.A., Michigan State University, 1975
- Heerema, Douglas L., Assistant Professor of Accounting (1979) B.A., Central College, 1961; M.A., University of Iowa, 1963; Ph.D., 1966
- Helmkamp, John G., Professor of Accounting (1973) B.S., Purdue University, 1960; M.B.A., Indiana University, 1965; D.B.A., 1968
- Hemmer, Edgar H., Associate Professor of Finance (1980) B.S., U. S. Naval Academy, 1946; B.S.A.E., U. S. Naval Postgraduate School, 1954; M.S.I.E., Purdue University, 1955; Ph.D., 1972

- Hustad, Thomas P., Associate Professor of Marketing (1977) B.S., Purdue University, 1967; M.S.I.M., 1969; Ph.D., 1973
- Jerman, Roger E., Professor of Transportation (1974) B.S., University of Oregon, 1965; M.B.A., 1967; D.B.A., University of Oklahoma, 1974
- Jones, William Paul, Jr., Assistant Professor of Accounting (1966) B.S., Indiana University, 1950; M.B.A., 1951; C.P.A., 1954; J.D., 1958
- Keller, Howard J., Visiting Lecturer of Accounting (1981) B.S., Indiana University, 1970; M.B.A., 1978; C.P.A.
- Kulsrud, William Norman, Assistant Professor of Accounting (1979) B.S., Oklahoma State University, 1971; Ph.D., University of Texas, 1980
- Leibman, Jordan H., Assistant Professor of Business Law (1979) A.B., University of Chicago, 1950; M.B.A., 1955; J.D., Indiana University, 1979
- Lenz, Robert Thomas, Assistant Professor of Business Administration (1977) B.S., Indiana University, 1969; M.B.A., University of Louisville, 1972; D.B.A., Indiana University, 1978
- Lyles, Marjorie A., Assistant Professor of Business Administration (1977) B.S., Carnegie-Mellon University, 1969; M.L.S., University of Pittsburgh, 1971; Ph.D., 1977
- O'Neil, Brian Frederic, Associate Professor of Operations and Systems Management (1979) B.S.I.E., Syracuse University, 1967; M.S., Purdue University, 1969; Ph.D., 1971
- Paap, John Edward, Assistant Professor of Business Administration (1977) B.A., California State University, Long Beach, 1966; M.B.A., University of West Florida, 1973; Ph.D., Massachusetts Institute of Technology, 1979
- Ross, Ronald S., Assistant Professor of Accounting (1977) B.B.A., University of Texas, 1971; Ph.D., 1977
- Soni, Ashok Kumar, Assistant Professor of Business Administration (1980) B.S., Manchester University, 1971; M.S., Strathclyde University, 1973; M.B.A., Indiana University, 1979
- Udell, Gregory F., Visiting Lecturer of Finance (1981) B.A., DePauw University, 1968; M.A., Northern Illinois University, 1973
- Watson, Kathleen M., Assistant Professor of Administrative and Behavioral Studies (1978) B.S., University of Utah, 1972; M.B.A., 1974; Ph.D., 1978

... and great support... established...  
... of Alpha Psi Omega...  
... the Central Regional Committee...  
... in September...  
... possibility of establishing...  
... potential difficulty...  
... campus with many part-time...  
... to begin recruiting...  
... the benefits and inviting students...  
... Alpha Psi Omega...  
... representatives from the...  
... Central Office...  
... The evening generated...  
... and the...  
... first pledge ceremony was held...  
... November 30, 1961.

**ALPHA PSI OMEGA**

... two weeks after the initial meeting, Alpha Psi Omega was chosen  
... a university name, and a form of lines was prepared. The following officers  
... were elected to serve the newly formed chapters:

- President - Darrell D... ..
- Senior Vice President - Paul Spellman
- Vice President of Professional Activities - Peggy Rowland
- Vice President of Pledge Education - Gail Schulz
- Treasurer - Tim H... ..
- Secretary - Kinsey Wells
- Chairman - Joseph Nelson
- Historian - Francis Laska

## HISTORY OF ALPHA PSI OMEGA

It is said that great things come from small beginnings, and that is certainly true of Alpha Psi Omega colony in Indianapolis. On August 29, 1981, Rick Trent, District Director, met with Jeff Philippi, Chairman of the Central Region's Committee on Expansion. As a result of that meeting, on September 2 Rick met with Dean Lewis and Pamela Neal to discuss the possibility of establishing a Delta Sigma Pi chapter at IUPUI. Despite the potential difficulty of establishing a strong organization on a commuter campus with many part-time and employed students, the decision was made to begin recruiting. Letters were sent to prospective members, explaining the benefits and inviting students to an information hour on November 8. Delta Sigs from Ball State and Indiana State joined with representatives from the Central Office to share information about the fraternity. The evening generated enough enthusiasm to forge ahead with plans for chapter formation, and the first pledge ceremony was held on Sunday, November 15, 1981.

Just two weeks after the initial meeting, Alpha Psi Omega was chosen as a temporary name, and a letter of intent was prepared. The following officers were elected to serve the newly pledged members:

President - Darrell Pieczko  
Senior Vice President - Paul Spellman  
Vice President of Professional Activities - Peggy Howard  
Vice President of Pledge Education - Beth Schuh  
Treasurer - Tina Hedrick  
Secretary - Kimalie Webb  
Chancellor - Joseph Malcom  
Historian - Frances Lutocka

Committees organized, but most activities were temporarily interrupted by finals and semester break. Planning continued over the holidays, and when school resumed in January, a calendar of activities was prepared, with spring installation as the priority goal. A proposed budget was presented, and work on the petition continued. By the end of January, by-laws were adopted and plans for rush activities were nearly complete.

On January 30, Darrell Pieczko, Peggy Howard, Tina Hedrick and Fran Lutocka attended the Area Conference in Muncie. Though barred from ritual proceedings, the chapter presentations provided many benefits. Talking and listening to Delta Sigs from other schools fostered a real sense of belonging, along with the realization that many of our problems were shared by older, established chapters. The conference stimulated new ideas for fund-raising, pledge education, and professional activities, and provided role models for a new chapter to follow. Resources were generously shared by those attending. Ball State loaned their excellent banner, posters, and scrapbook for our use during rush, and IU Northwest sent a sample lecture series program. An invitation to participate in the Student Conference on International Business in Chicago was another significant result of the Area Conference, since twelve representatives from Alpha Psi Omega will attend this outstanding professional opportunity.

Despite the heavy snows, rush plans were carried out. A recruiting table and display attracted much attention, and provided publicity for the chapter, as well as new pledges. A social information hour was held, and on February 19, a party followed pledging ceremonies for the spring pledge class. Sixteen new

pledges quickly chose officers and committees and began working on membership requirements. Officers elected by the spring pledge class were:

President - Eric Hillenbrand  
Vice President - John Fitzgerald  
Treasurer - Annette Williams  
Secretary - Libby Chambers  
Chancellor - Sabrina Parker

In addition to attending the World Trade Conference, the spring pledges plan a car wash and a paddle party for their big brothers. The group recently assisted the Disabled Student Organization at IUPUI with their Rose Sale. Big brothers also helped with the sale, which was so successful that it will be greatly expanded next year. Funds from the sale were sufficient to provide DSO with operating funds for the coming year, and to establish an emergency loan fund for disabled students.

A varied professional program has been provided by the professional committee. Robert Norris, from Public Service Indiana, discussed planning and providing for future energy needs, including the role of the Marble Hill nuclear plant. Warren Lutocka, Drackett District Sales Manager, shared practical suggestions for applying, interviewing, and getting a job. IUPUI faculty member John Silvia stressed the need for business to utilize current economic information in planning and decision-making, relating the application of Reagan economic policies. Future speakers include Bill Julian, a lawyer, who will talk about labor-management negotiations, and Mike Bell, from St. Vincent's Hospital, who will share information about health care providers and their plans for the future. Tours of Lilly and Marble Hill are planned,



with Alumni Club members accompanying us on the latter trip.

Our group has had a close relationship with the Indianapolis Alumni Chapter, who have provided much assistance. Two athletic events have been jointly attended by pledges and alumni members, a Pacers basketball game and a Checkers hockey match. Delta Sig will be represented by John Burnham in the 500 Mini-Marathon, to be run in May. With warm weather approaching, plans for additional outdoor activities are being discussed, including participation in the IUPUI Spring Festival.

Several fund-raising projects have been developed this year, including inventory at Block's, a raffle, Sears credit card solicitation, and Long John Silver's Bounty Bucks program. A can-recycling project was established as both a conservation measure and a money-maker. The Pepsi bottling company donated collection barrels, painted like giant Pepsi cans, to launch this continuing campaign. The Disabled Student Organization insisted on sharing some of the proceeds of their flower sale, since our efforts enabled them to far surpass their initial goal. Most of the money raised will be used for organization and charter expenses, and to defray the cost of the banquet.

Plans are being made for our Installation Banquet, to be held April 17, 1982, at the Holiday Inn Northwest. The banquet, with honored guests and good food, will culminate in an evening of dancing and fellowship, shared by brothers from nearby chapters. The evening will celebrate the hard work and accomplishments of our first year, and justify the faith Dean Lewis, Jeff Philippi, and Rick Trent had in us. Not content to rest on our accomplishments, our new officers will lead us to greater achievements as active members of the International Fraternity of Delta Sigma Pi.

## AIMS AND PURPOSES OF ALPHA PSI OMEGA

1. To petition for and establish a chapter of the International Fraternity of Delta Sigma Pi on the campus of Indiana University/Purdue University at Indianapolis.
2. To encourage scholarship among the members.
3. To promote the study of business at IUPUI.
4. To promote closer affiliation between those engaged in commerce and students of business.
5. To develop higher standards of commercial ethics.
6. To encourage social interaction between students, faculty, and alumni.
7. To further the civic, cultural, and commercial welfare of the Indianapolis community.



George B. ...



...



John ...



...



...



...

CHARTER MEMBERS





Thomas Beechler



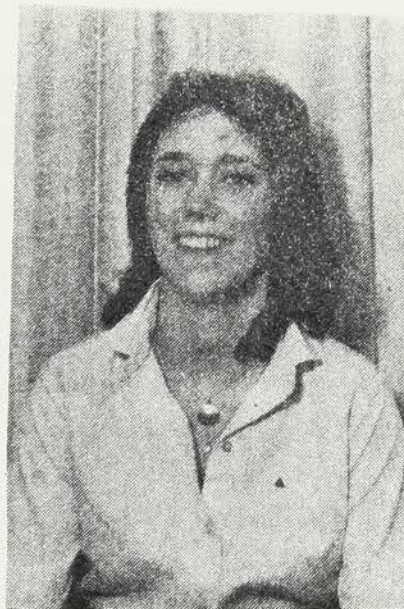
Kim Bottin



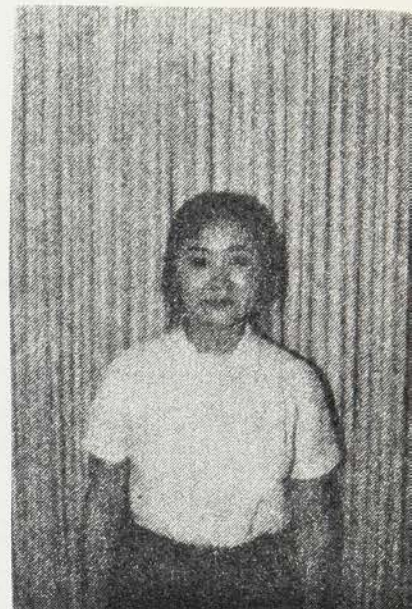
John Burnham



Tom Burrell



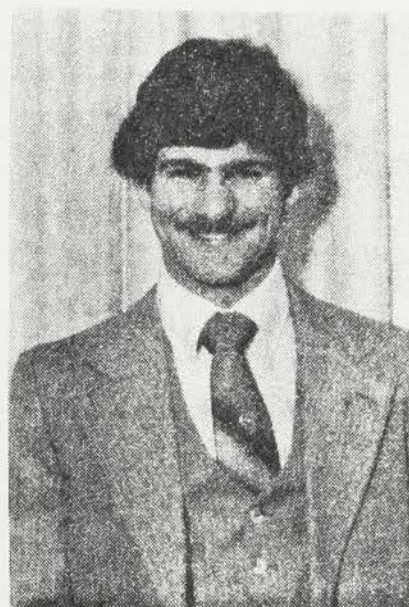
Libby Chambers



Chong A. Choe



Cindy Dall



Christopher Dallas



Randy Dobbs



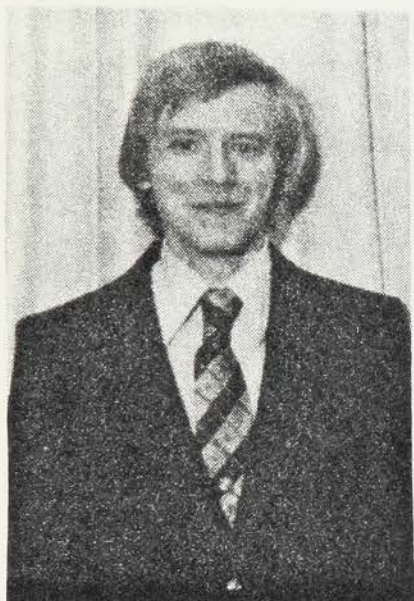
Ronald Fields



John Fitzgerald



Jacque Goodloe



Michael S. Haroldson



Tina R. Hedrick



Eric Hillenbrand



Peggy Howard



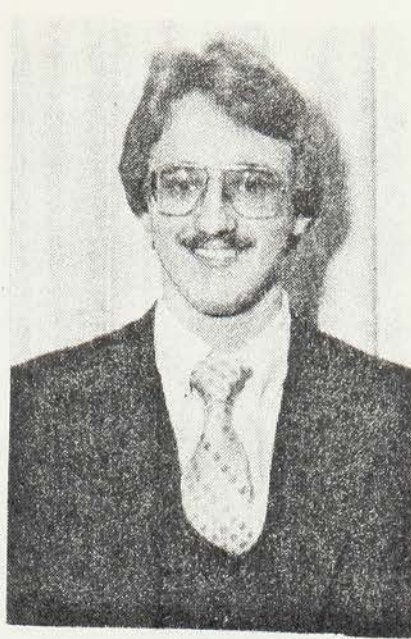
Angie Larrabee



Frances L. Lutocka



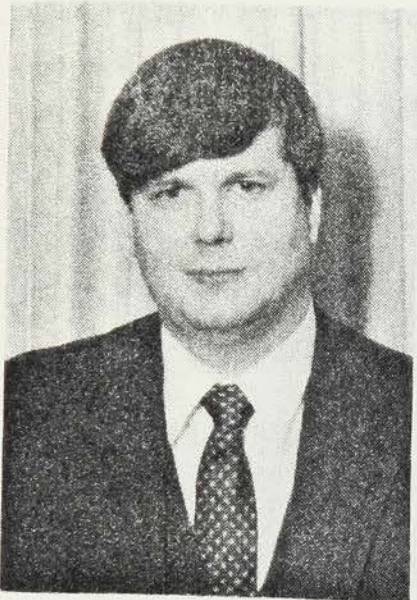
Joseph A. Malcom



Dirk A. Mandla



Sabrina Parker



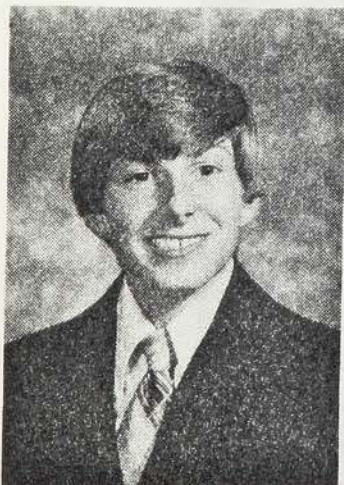
Darrell A. Pieczko



Steven E. Preiner



Beth Schuh



Larry Schulz



Nathaniel R. Shobe



Paul Spellman



Christopher H. Walters

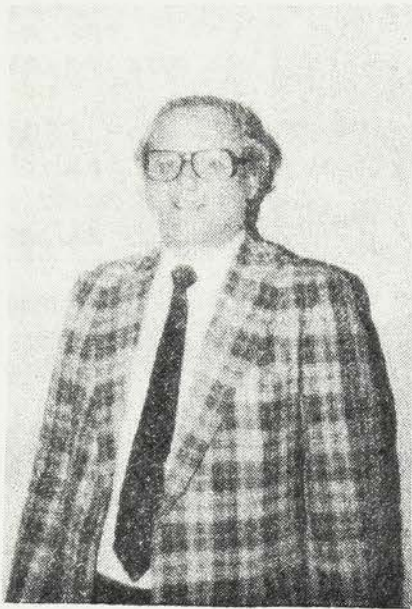


Kimalie S. Webb

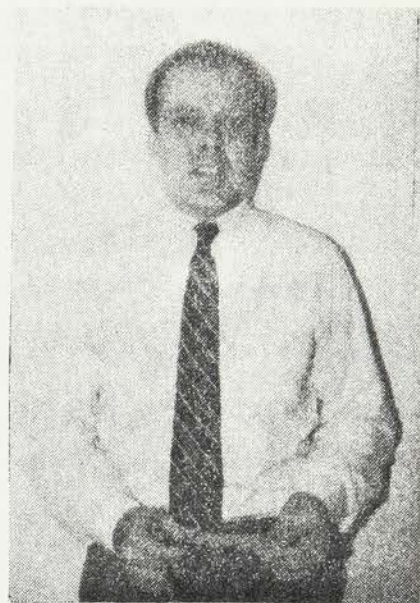


Annette M. Williams

F  
A  
C  
U  
L  
T  
Y



William Paul Jones, Jr.

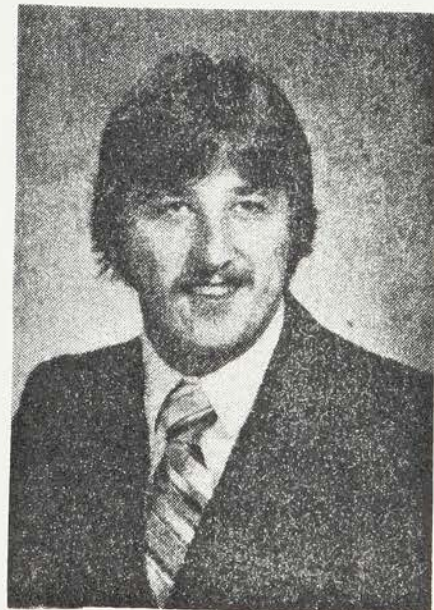


Howard J. Keller

D  
E  
L  
T  
A  
S  
I  
G



Jeff Philippi



Rick Trent

Tom Beechler - Tom has just recently gotten married, works as a part time salesperson, and enjoys hobbies such as archery and boating. He is a Junior with a major of Management and Administration.

Kim Bottin - Kim works part time at O'Malia's Market. She is a Junior working towards a degree in Accounting and is trying to find an internship.

John Burnham - John is a Junior in Finance and is active in the Student Assembly. He enjoys running and plans to run in the 500 Mini Marathon in May.

Tom Burrell - Tom is married, works as a machinist for International Harvester and likes to play tennis. His major is Management and Administration in which he will soon receive his degree.

Libby Chambers - Libby is a Sophomore and as yet has not decided on which business major she will work. She enjoys photography, bike riding, cooking, travel and scuba diving.

Chong Choe - Chong is originally from Korea, and is a Junior with an Accounting major. She also works part time as a waitress.

Cindy Dall - Cindy is a Junior with a Management and Administration major. She enjoys playing tennis and riding bikes.

Chris Dallas - Chris works at the Silhouette Health Spa, is a member of Alpha Psi Omega, is an assistant Scout Master and enjoys wrestling, football and track. He is a Junior in Accounting.

Randy Dobbs - Randy is a part time salesperson, likes racquetball and other sports (baseball's a favorite) and is a Sophomore in Management and Administration.

Ron Fields - Ron is an amateur photographer and enjoys basketball, tennis and football. He also works part time at Lilly's.

John Fitzgerald - John enjoys photography and sailing, as well as socializing. He is a Junior in Accounting and plans to go on to law school after getting his CPA certification.



Jacque Goodloe - Jacque is a Sophomore in Accounting and works in computer programming at G. E. She likes sewing, swimming, tennis, and reading.

Mike Haroldson - "A Packer backer 'til the end." Mike works part time and is a Junior with a double major in Marketing and Management and Administration. He also has minors in Economics and Telecommunications.

Tina Hedrick - Tina is a Junior in Finance and may go on to get an MBA/JD graduate degree. She is the current Alpha Psi Omega colony Treasurer and enjoys reading, bike riding, and horseback riding.

Eric Hillenbrand - Eric works part time as an assistant manager of a restaurant and enjoys football and softball. He is a Junior in Marketing.

Peggy Howard - Peggy is our current V. P. in charge of Professional Activities. She is a Junior in Marketing and works at Ross & Babcock as a travel agent.

Angie Larrabee - Angie works part time as a waitress, is a Junior in Marketing, and enjoys racquetball and aerobics.

Fran Lutocka - Fran is our current Historian and is a member of the Accounting Club and NAA. She works at Sears, is involved in the Girl Scouts and enjoys camping and sewing.

Joe Malcom - Joe is from Moscow, Indiana in Rush County, is active in politics, and plays softball. He is our current Chancellor and is involved in a group trying to coordinate activities and improve conditions in the residence halls on campus.

Dirk Mandla - Dirk is also involved in the residence hall improvement group with Joe and is a member of the Econ Club. He is a Senior in Management and Administration and is getting married in August.

Sabrina Parker - Sabrina is a Sophomore in Marketing and enjoys the piano and ice skating. She also went to Miami of Ohio for two years.

Darrell Pieczko - Darrell is our current President, is involved in the Student Senate, and substitute teaches. He is a Junior in the Honors Program working for a degree in Finance.

Steve Preiner - Steve is a Junior in Management and Administration, a member of the Econ Club, a student senator, and a member of the residence hall group with Joe and Dirk. He has also served in the Navy.

Beth Schuh - Beth is a Junior in Accounting and our current V.P. in charge of Pledge Education. She also has a degree in education and has been a teacher.

Larry Schultz - Larry is a Sophomore in Management and Administration. He works in the Produce Dept. at Kroger and enjoys outdoor sports such as sailing, hiking, and tennis.

Nate Shobe - Nate is a Senior with a double major in Marketing and Management and Administration. He works in the Accounting Dept. at Sears and wants to be successful.

Paul Spellman - Paul is our current Senior V.P., he works part time at U.P.S., and enjoys fishing. He is a Junior working for a degree in Accounting.

Chris Walters - Chris is a Junior with majors of Marketing and Management and Administration, and hopes for a career in the manufacturing field. He enjoys many sports, including football, baseball, bowling and softball.

Kim Webb - Kim is our current Secretary, a student senator, and co-chairperson of the Distinguished Lecture Series on campus. She works part time at St. Vincent Hospital in the admitting department and enjoys tennis.

Ann Williams - Ann works for an engineering firm, is in the Accounting Club, and enjoys sewing. She is a Sophomore in Accounting.

CHAPTER ADVISOR

Biographical information - William P. Jones, Jr.

Home Address: 1160 Hillview Drive  
Franklin, IN 46131

Occupation: Attorney-CPA

Marital Status: married, three children

Business/Professional Memberships:

Indiana Association CPA's  
Indianapolis Bar Association  
Johnson County Bar Association  
American Bar Association  
Johnson County Parks Board  
Franklin Board of Zoning Appeals  
Faculty Member, IUPUI  
Trustee, Franklin College  
Director, Edinburg State Bank  
President and Chairman of Board, Automatron Engineering, Inc.

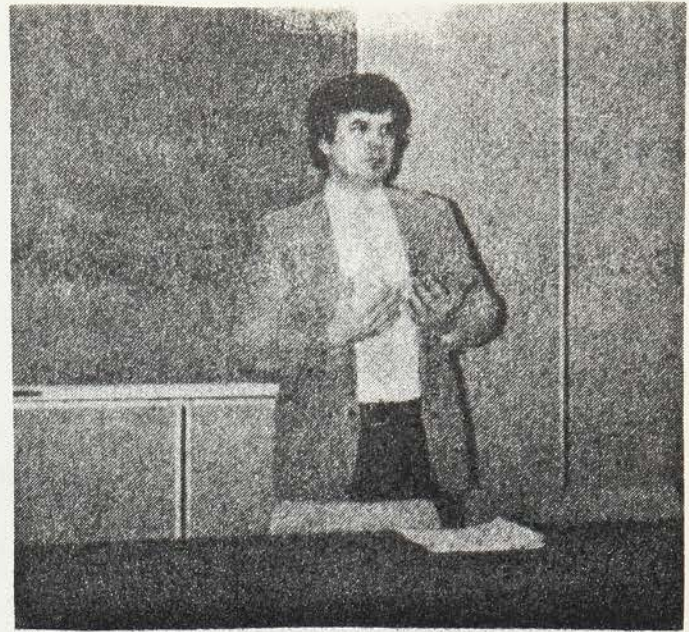
Activities/Memberships:

Delta Sigma Pi  
Beta Gamma Sigma  
Phi Delta Theta  
Franklin Chamber of Commerce  
Elks  
American Legion  
Fraternal Order of Police  
Sertoma

Education: Indiana University, B.S., 1950, cum laude  
Indiana University, MBA, 1951  
Indiana University School of Law, 1958



John talks with our speaker, Warren Lutocka



Professor Silvia discusses economic policy

## 36th Annual Business Conference

## 45th Chicago World Trade Conference

Hyatt Regency Chicago  
March 15-16, 1982

Members participate in business conferences



Recycling containers were donated by



Our photographers, Tom and Nate, get the picture taken!



Angie and Chris on duty at the library



Darrell and Libby sell roses in the School of Business



Tina taking orders for roses



John, Tom, Kim enjoy refreshments



Spring pledges take their work seriously